

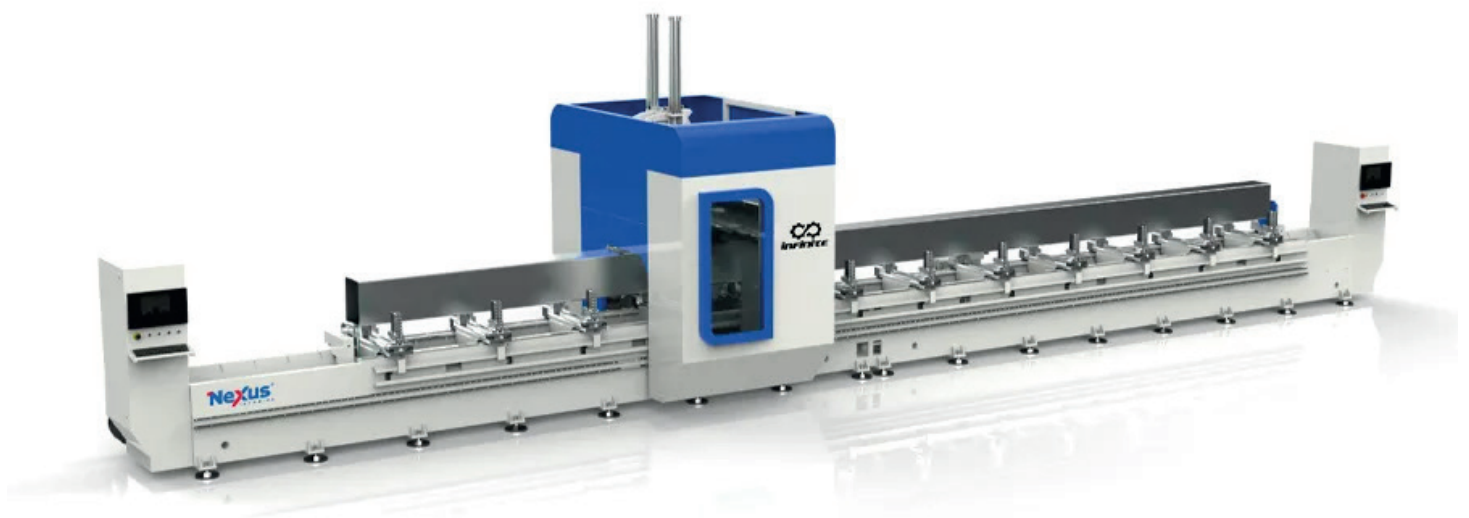
The logo for Nexus Technica features the word "Nexus" in a bold, blue, sans-serif font. A red chevron shape is integrated into the letter "x". Below "Nexus", the word "TECHNICA" is written in a smaller, blue, all-caps, sans-serif font. A registered trademark symbol (®) is located at the top right of the word "Nexus".

Nexus[®]
TECHNICA

nexustechnica.com

NEVA X5P

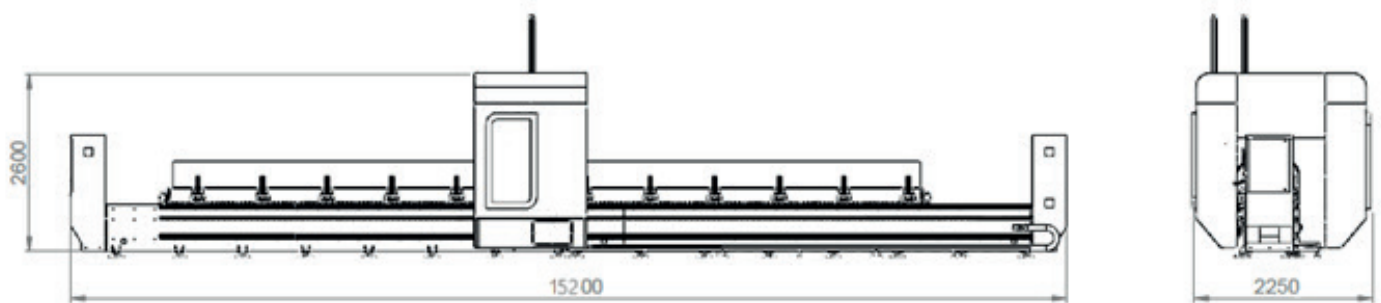
5 AXIS CNC MACHINING CENTER



NEVA X5P s a CNC-controlled 5-axis machining center specially designed for milling, drilling, and cutting operations on varoius aluminum, lightweight alloy, and aluminium profiles commonly used in the market.

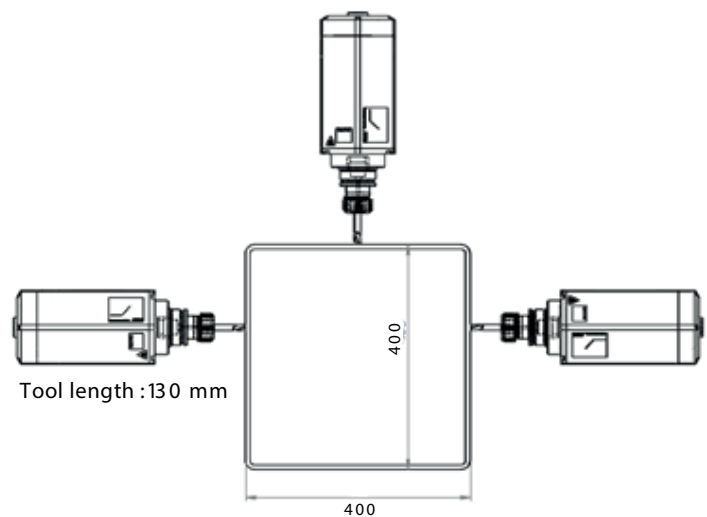
NEVA X5P

5 AXIS CNC MACHINING CENTER



Machine Dimensions:

X Axs 15200 mm,
Y Axs 2250 mm,
Z Axs 2600 mm,
C Axs 360°,
A Axs 360°,
B Axs 360° magazin.

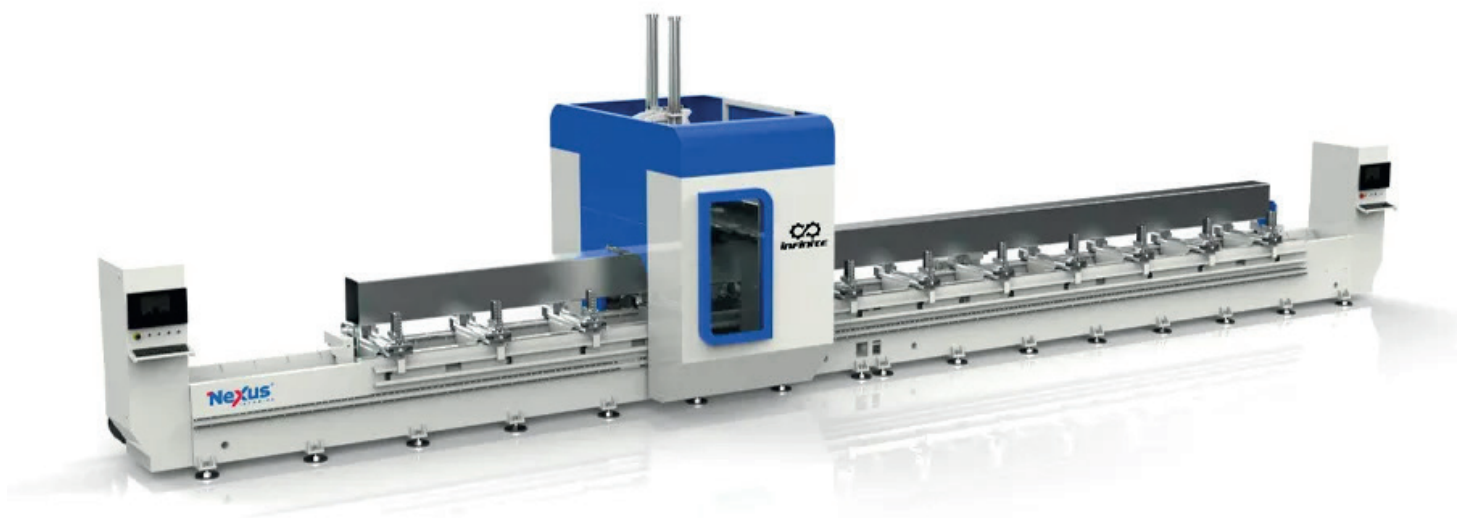


Processing Dimensions:

X 11000mm, The machine dimensions are adjustable.
Y 400 mm,
Z 400 mm,
A 125°,
C 360°.

NEVA X5P

5 AXIS CNC MACHINING CENTER



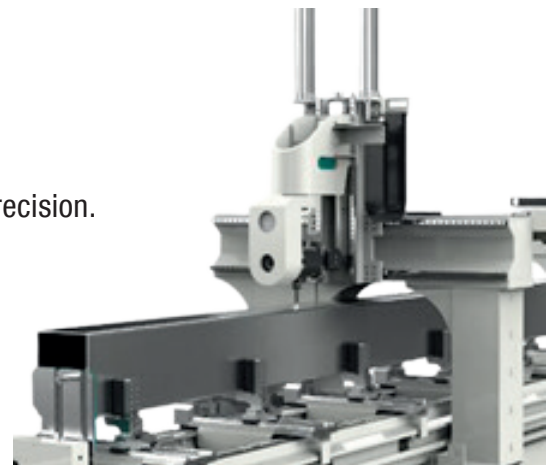
While in the waiting position in the machine park station, the vises are brought into the open position. The profile to be loaded should be leaned against the fixed front part of the vise. Then, the machine allows the possibility of operation by sending the desired file from the CAM program.

NEVA X5P

5 AXIS CNC MACHINING CENTER

DESIGN

A mechanical structure capable of processing aluminium profiles bidirectionally at high speed and high quality.
Chassis with stress relief applied to ensure continuous high-speed precision.
Axis speeds averaging 100 m/mn.
Capability to perform milling, chamfering, drilling, guide pulling, grooving, cutting, and other operations.
Workable profile section size: 400 x 400 mm.
Cutting tool cooling system.



CONTROL PANEL



Ergonomic 21" screens on both sides.
User-friendly interface with Windows 11 PC.
Compatibility with NCX extension software.
High-performance 5-axis FAGOR CNC control unit.
Optical communication and 0.001 mm command increment.
Communication via Ethernet.
Operation with G-Code.
Data transfer via USB and Ethernet.

CLAMPING SYSTEM

Capable of clamping parts up to 630 mm.

Easy compression adjustment.

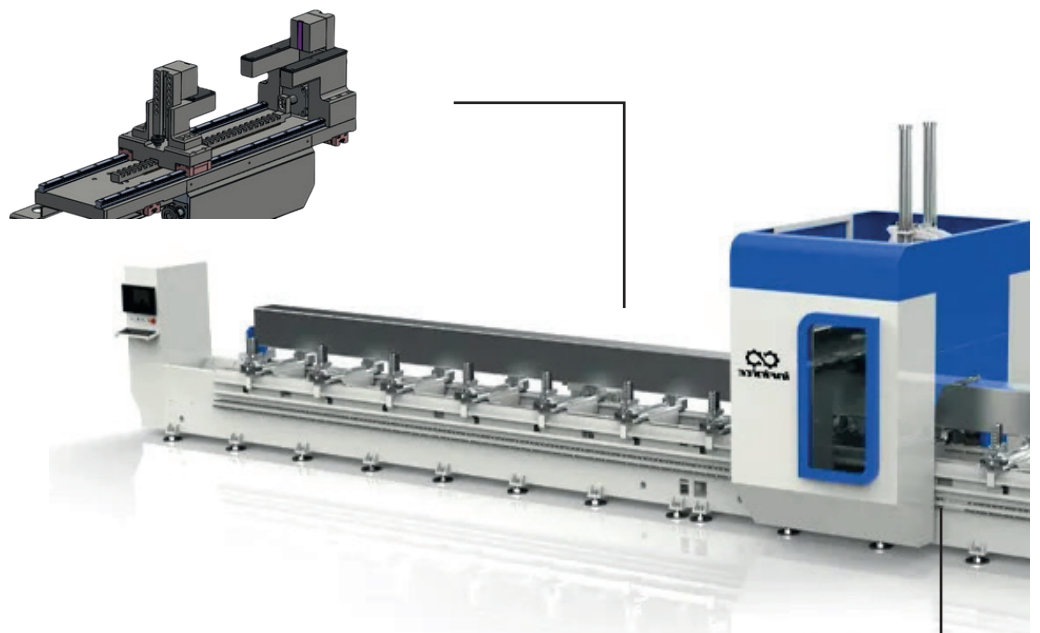
Automatic postoning with servo control according to the parts to be machined.

Advantage of easy loading since the fixed part of the vise is at the front.

Roller system on the vise surface provides ease of sliding for the profile.

NEVA X5P

5 AXIS CNC MACHINING CENTER



MAGAZINE SYSTEM

Magazine with a capacity of 8 tools.

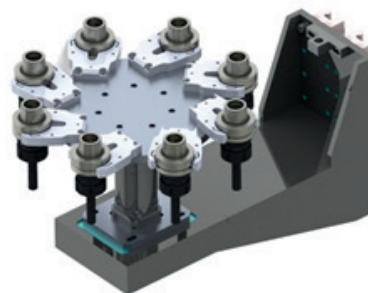
Ø500 Saw blade.

Separate magazine for the saw blade.

Automatic magazine cover.

Time-saving advantage with magazine postoning.

Saves time by changing tools while transtonng from one operation to another on the workpiece.



SAW

Separate magazine for the saw blade.

Capacity to accommodate saw blades up to Ø500.

The saw can work comfortably with the postonable vise.



SUPPORT

Dual-sided profile support system for
easy part resetting





SPINDLE

Spindle Motor: 15-18 kW, 24000 RPM, with automatic tool changer.

ILC Tool Cooling System.

HSK tool holder and tool holder cleaning system.

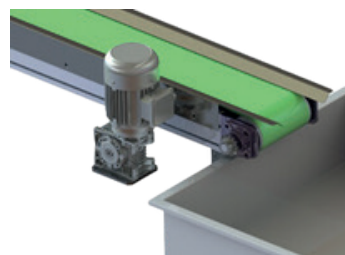
Tool change safety protocols written to minimize operator errors.

Positioning with optical communication and 0.001 mm command increment.



CHIP EVACUATION SYSTEM

Chip conveyor for waste parts.



COVER SYSTEM

The machine has two zones, A and B:

- Zone A: 4000 mm
- Zone B: 4000 mm

Two separate workpieces can be operated.

Safety light barriers are used in front of the CNC



TECHNICAL SUPPORT

Periodic maintenance reminder function.

Remote connection for service support.

SAFETY

Ability to continue operations from the last position in case of power outage with UPS system.

Automatic recovery function that sends the spindle to a safe zone.

Working safety ensured by protective fences and safety barriers.

Safety labels.





Contact Us

NEXUS TECHNICA Ltd., str. Bulgaria 9, fl. 3, apt. 12, Plovdiv, BULGARIA

M: (TR) +90 545 401 19 84 (BG) +359 (0) 877 01 19 21 sales@nexustechnica.com www.nexustechnica.com

[@ nexustechnica](#)

[in nexus-technica-ltd](#)