

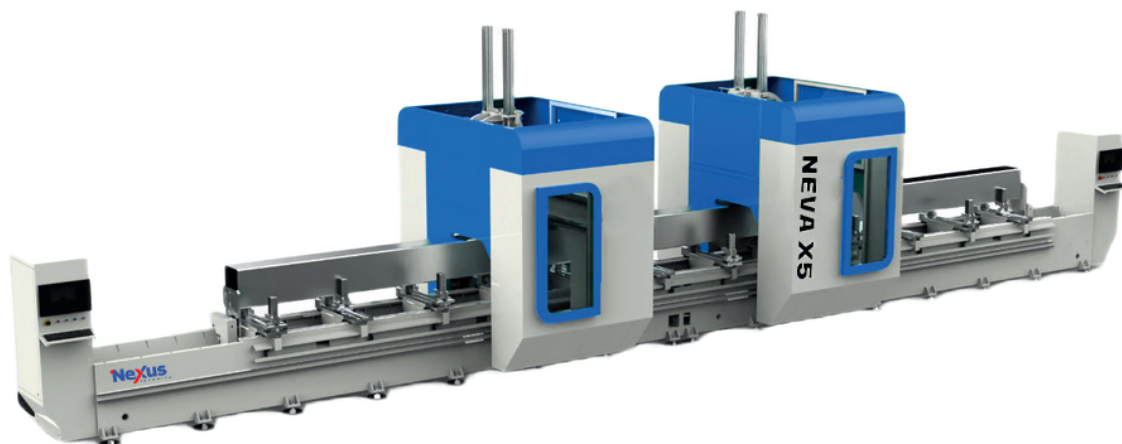
The logo for Nexus Technica features the word "Nexus" in a bold, blue, sans-serif font. A red chevron shape is integrated into the letter 'x'. Below "Nexus", the word "TECHNICA" is written in a smaller, blue, all-caps, sans-serif font. A registered trademark symbol (®) is located at the top right of the word "Nexus".

Nexus[®]
TECHNICA

nexustechnica.com

NEVA WX5

30-AXIS CNC MACHINING CENTER

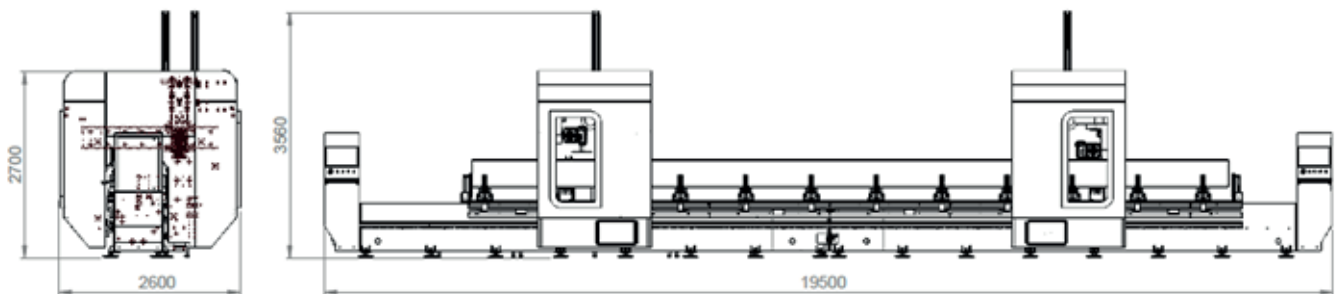


NEVA WX5;

A CNC-controlled 30-axis machining center specially designed for milling, drilling, and cutting aluminum and lightweight alloy profiles available in the market. It can operate in two separate zones simultaneously. Additionally, it offers the possibility of being operated as two separate machines if desired.

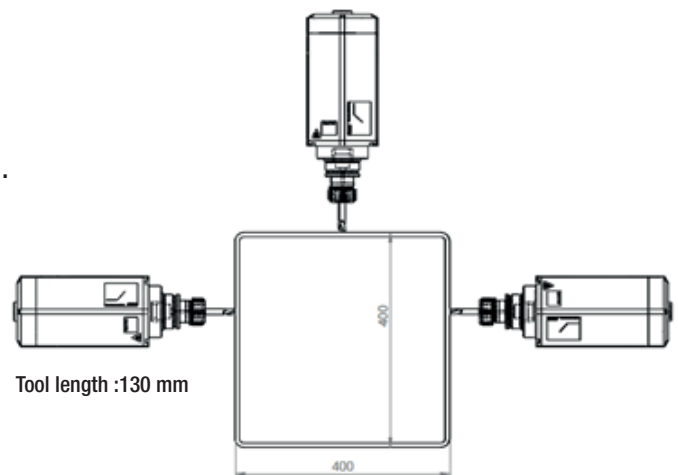
NEVA WX5

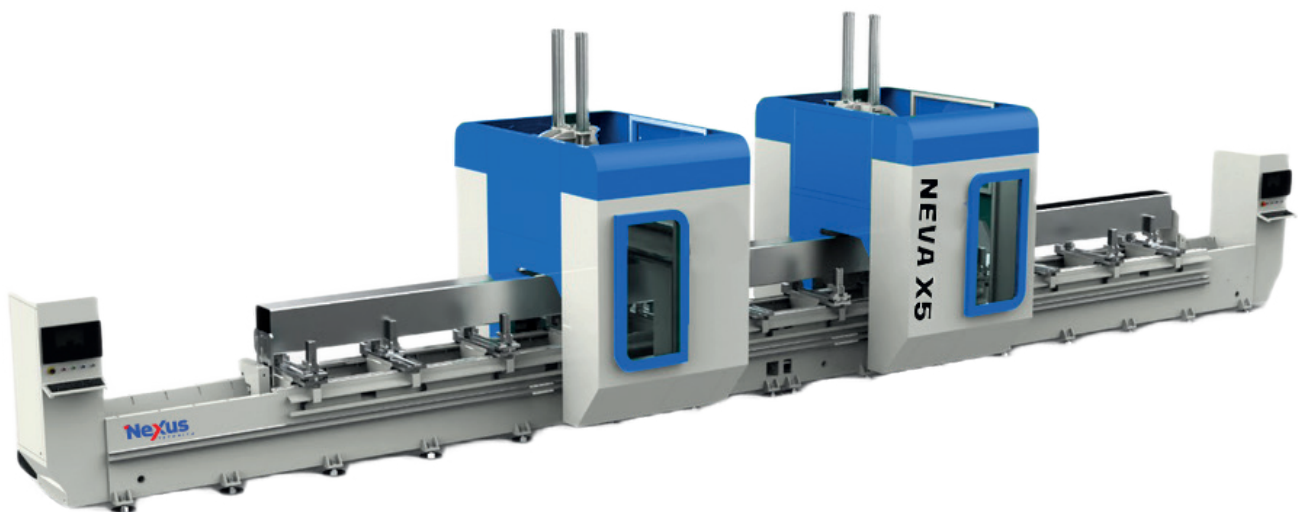
30-AXIS CNC MACHINING CENTER



Machine Dimensions: X Axs 19500 mm – X1,
Y Axs 2600 mm – Y1,
Z Axs 2700 mm – Z1,
C Axs 360° - C1,
A Axs $\pm 125^\circ$,
B Axs 360° magazine – B1.

Processing Dimensions: X 17000 mm,
Y 400 mm,
Z 400 mm,
A $\pm 125^\circ$,
C 360°.





NEVA WX5 PROCESSING CENTER:

The machine has a net processing dimension of 17 meters, which can be customized according to customer requirements.

The operator can choose to run the machine as two separate machines in one zone or as separate machines in two zones.

The machine is equipped with STL data reading capability, allowing projects designed in SOLIDWORKS to be directly converted into G-codes for processing on the machine.

Production is ensured to be system-dependent rather than operator-dependent.

Processing tolerances are within ± 0.1 .

DESIGN:

A mechanical structure capable of high-speed and high-quality bidirectional processing of aluminum profiles.

Chassis with stress relief for ensuring continuous high-speed precision.

Axis speeds averaging 100 m/mn.

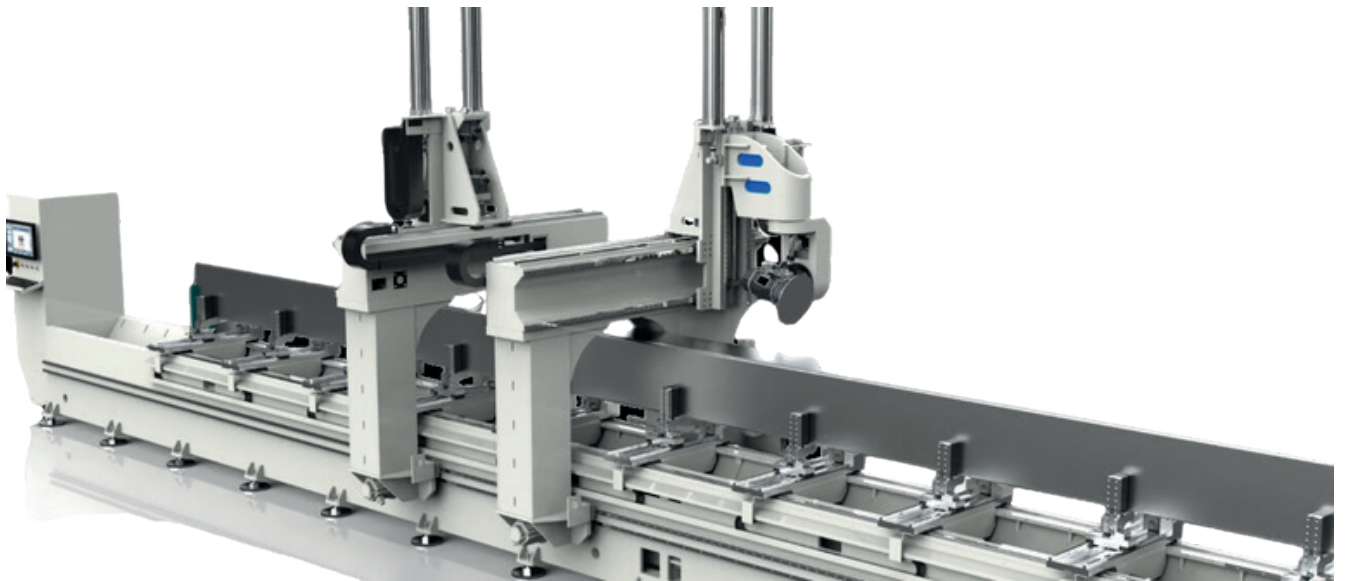
Capability to perform milling, drilling, chamfering, grinding, grooving, cutting, and similar operations.

Processing length of 17,000 mm in single-station operation.

Processing length of 8,500 mm x 2 in dual-station operation.

Ability to work with profile cross-sections measuring up to 400 x 400 mm.

Cutting tool cooling system.

**CONTROL PANEL:**

Ergonomic 21" screens on both sides.

User-friendly interface compatible with Windows 11 PC.

Compatibility with NCX extension software.

High-performance 5-axis Smultene FAGOR CNC control unit.

Optical communication and 0.001 mm command increment.

Communication via Ethernet.

Operation using G-Code.

Data transfer via USB and Ethernet

**Spindle:**

HITECO Spindle Motor with automatic tool changer, rated at 15-18 kW and 24000 RPM.

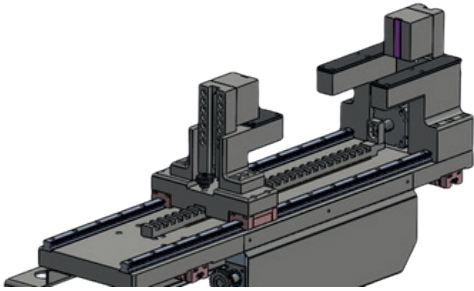
Equipped with HSK F63Er32 Toolholder.

Features an ILC Tool Cooling System.

Utilizes HSK tool holder and tool holder cleaning system.

Incorporates safety protocols for minimizing operator errors during tool changes.



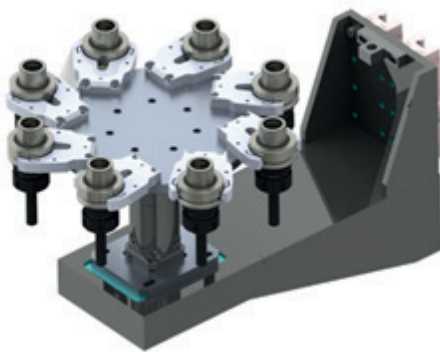
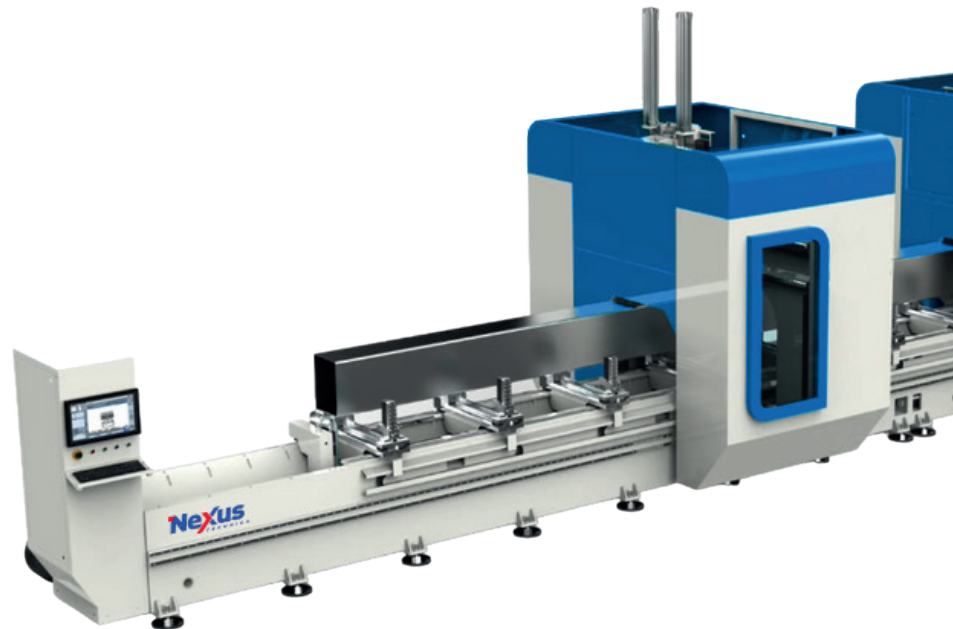
**CLAMP SYSTEM:**

Standard configuration includes 16 clamps (subject to tolerance based on machine size).

Automatic postoning with servo control based on the workpiece.

Capable of clamping parts up to 630mm on the Y-axis.

Easy adjustment for clamping pressure

**MAGAZINE SYSTEM:**

Two magazines with a capacity of 8 tools each.

Enables tool change during machining to save time.

Can accommodate a Ø500mm saw blade.

COVER SYSTEM



The machine has 2 zones, namely A and B:

Zone A: 8500 mm,

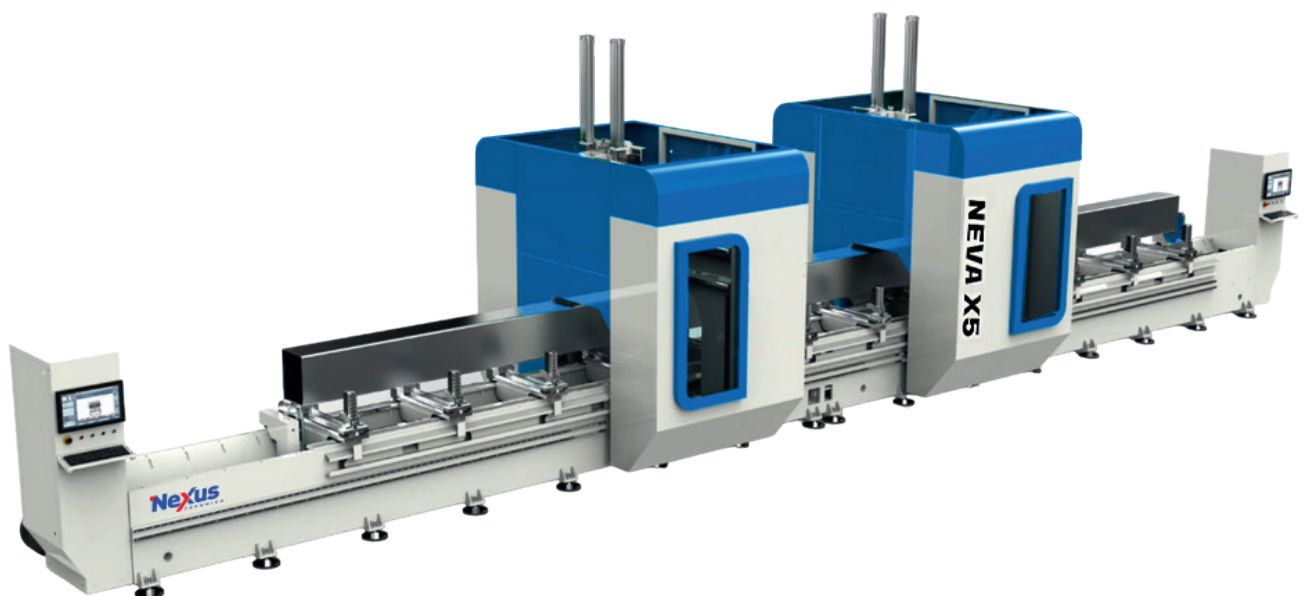
Zone B: 8500 mm,

Each zone can operate independently, allowing for the processing of two separate workpieces simultaneously. Additionally, if needed, the machine can be configured to operate as a single zone

TECHNICAL SUPPORT

Periodic maintenance reminder function.

Remote connection for service support.



SAFETY

Ability to continue operations from the last position in case of power outage with UPS system.

Automatic recovery function that sends the spindle to a safe zone.

Working safety ensured by protective fences and safety barriers.

Safety labels.



Contact Us

NEXUS TECHNICA Ltd., str. Bulgaria 9, fl. 3, apt. 12, Plovdiv, BULGARIA

M: (TR) +90 545 401 19 84 (BG) +359 (0) 877 01 19 21 sales@nexustechnica.com www.nexustechnica.com

 [nexustechnica](#)

 [nexus-technica-ltd](#)